



# TTG2200A - TTW4000A

## TIG Torch Wear Parts

Max. 220amp DC Gas-cooled Torch

Max. 400amp DC Water-cooled Torch



### Screw on Gas Nozzle Ceramics – Standard (10 per Box)



F42.0300.0672	#4 Ceramic Nozzle 6.5mm x 44mm
F42.0300.0461	#5 Ceramic Nozzle 8.0mm x 44mm
F42.0300.0462*	#6 Ceramic Nozzle 9.5mm x 44mm
F42.0300.0463	#7 Ceramic Nozzle 11.0mm x 44mm
F42.0300.0464	#8 Ceramic Nozzle 12.7mm x 44mm
F42.0300.0465	#9 Ceramic Nozzle 14.3mm x 44mm
F42.0300.0466	#10 Ceramic Nozzle 15.9mm x 44mm
F42.0300.0467	#11 Ceramic Nozzle 18.0mm x 44mm

### Push on Gas Nozzle Ceramics – Long Series (10 per Box)



F42.0300.1120	#4 Ceramic Nozzle 6.5mm x 64mm
F42.0300.1121	#5 Ceramic Nozzle 8.0mm x 64mm
F42.0300.1122	#6 Ceramic Nozzle 9.5mm x 64mm
F42.0300.1123	#7 Ceramic Nozzle 11.0mm x 64mm

### Clamping Nuts



F42.0001.0693	1.6mm Clamping Nut
F42.0001.0694*	2.4mm Clamping Nut
F42.0001.0695	3.2mm Clamping Nut
F42.0001.0696	4.0mm Clamping Nut

### Back Caps



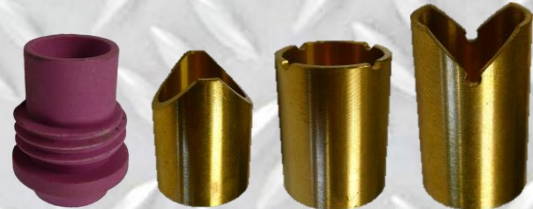
F44.0350.0171	Short Back Cap
F44.0350.0170*	Long Back Cap

### Gas Lenses



F44.0350.1501	1.6mm Gas Lens
F44.0350.1460	2.4mm Gas Lens
F44.0350.1461	3.2mm Gas Lens

### Spot Welding Accessories\*\*



F42.0100.0176	Spot Welding Ceramic
F42.0001.1409	Internal Spot Nozzle
F42.0001.1410	Flat Spot Nozzle
F42.0001.1408	External Spot Nozzle

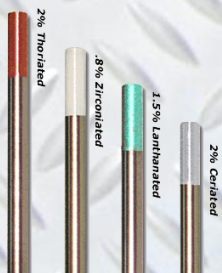
### Clamping Sleeves / Collets 59mm



F42.0001.0698	1.6mm Collet
F42.0001.0699*	2.4mm Collet
F42.0001.0700	3.2mm Collet
F42.0001.0701	4.0mm Collet

**Note: To prevent damage to torch neck DO NOT over tighten back caps. Replace clamping sleeves and/or Clamping nuts frequently to ensure a long life of torch necks.**

### Tungsten Electrodes (10 per Packet)



	2% Thoriated Red DC ONLY	8% Zirconiated White AC ONLY	1.5-2% Lananated Gold/Sky Blue AC/DC	2% Ceriated Grey AC/DC
1.0mm	B7000070			
1.6mm	B7000073	B7000030	B7000196	B7000167
2.4mm	B7000080	B7000034	B7000198	B7000169
3.2mm	B7000099	B7000036	B7000200	B7000170

\*Standard parts supplied with torch.

\*\* Suitable for use with Fronius inverters featuring the 'Spot welding' function.

For the full parts listings please contact your Digitalweld representative.

# DIGITALWELD

Unit D, 17 Hobill Ave, Wiri, Manukau

Free Phone: (0800) 376 648 Email: sales@digitalweld.co.nz

[www.digitalweld.co.nz](http://www.digitalweld.co.nz)