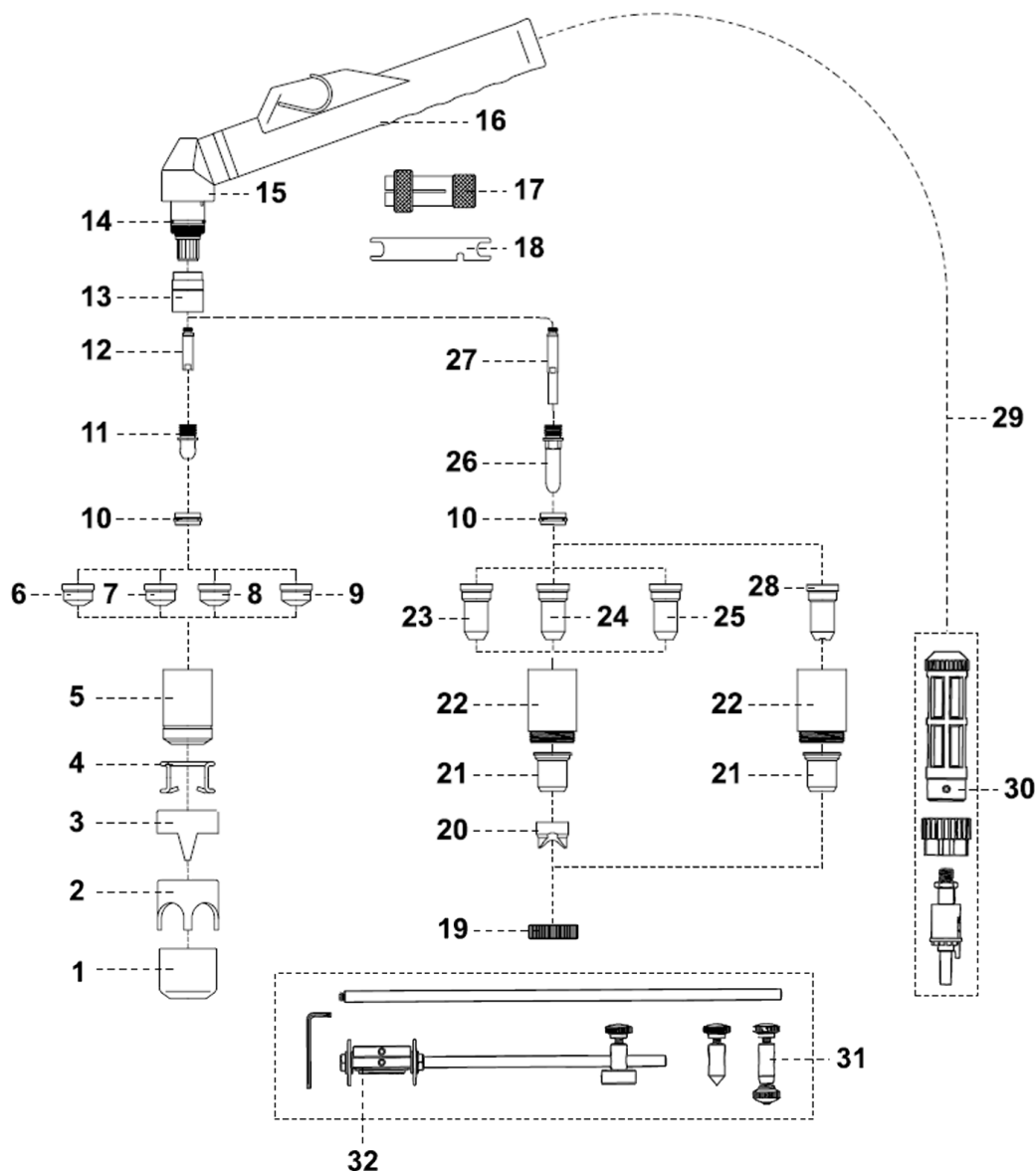




plasma
cutting

P-150 Torch Wear Parts



Pos.	Part #	Description	Pos.	Part #	Description
1	C454452	Tall type spacer for deseaming	17	C414350	Extractor for air diffuser
2	C424448	4 tip spacer	18	C414335	Wrench for electrode
3	C424445	Double Tipped Spacer	19	C455358	Threaded locking ring
4	C424438	Spring Spacer – High Type (E98322B)	20	C424464	Spacer for contact cutting for high currents
5	C486084	External nozzle for spring spacer	21	C487620	Nozzle Shield for Cutting on Contact – 50A Max.
6	C408534	Ø1.35mm long service life short tip (E98318B)	22	C486088	External threaded nozzle
7	C408536	Ø 1.60mm long service life short tip (E98319B)	23	C408568	Extended contact tip Ø 1.35mm max 90A
8	C408538	Ø 1.80mm long service life short tip cutting	24	C408570	Extended contact tip Ø 1.60mm max 120A
9	C408540	Short hood Ø 3.0mm for deseaming	25	C408572	Extended contact tip Ø 1.80mm max 150A
10	C482122	Vespel air nozzle (E98316)	26	C425055	Long service life extended electrode
11	C425015	Long service life short electrode	27	C482095	Extended air pipe
12	C482090	Short air pipe	28	C408542	Extended tip for cutting on contact
13	C436155	Vespel torch body Insulation	29	C413640	Power and air cable group (6m)
14	C433655	Torch Head O-ring	30	C236645	Centralized connection
15	C422655	Torch Head	31	C418518	P150 torch compass
16	C434694	Black handle with Microswitch	32	C410688	Holder for P150 torch compass

DIGITALWELD

J.D.M Holdings Ltd

Unit D/17 Hobill Avenue, Wiri, Manukau, 2104. P.O Box 97622 Manukau City, Manukau 2241, New Zealand
Ph: +64 (09) 263 7099 Fax: +64 (09) 263 5062 Email: sales@digitalweld.co.nz Website: www.digitalweld.co.nz